



# PRODUCT CATALOG

100 years of experience and expertise



**FLETCHER & SONS**  
**FOUNDRY**

# Who we are

We are a global company which has been servicing the rail, manufacturing, mining and construction industries with casting, machine components and engineering solutions.

**100**

Years in the industry.

This number has a significant meaning for our company. Each year has brought a new challenge for our staff, stakeholders and clients. **As a team, we have worked together to provide the best solutions suitable for each client's needs.**

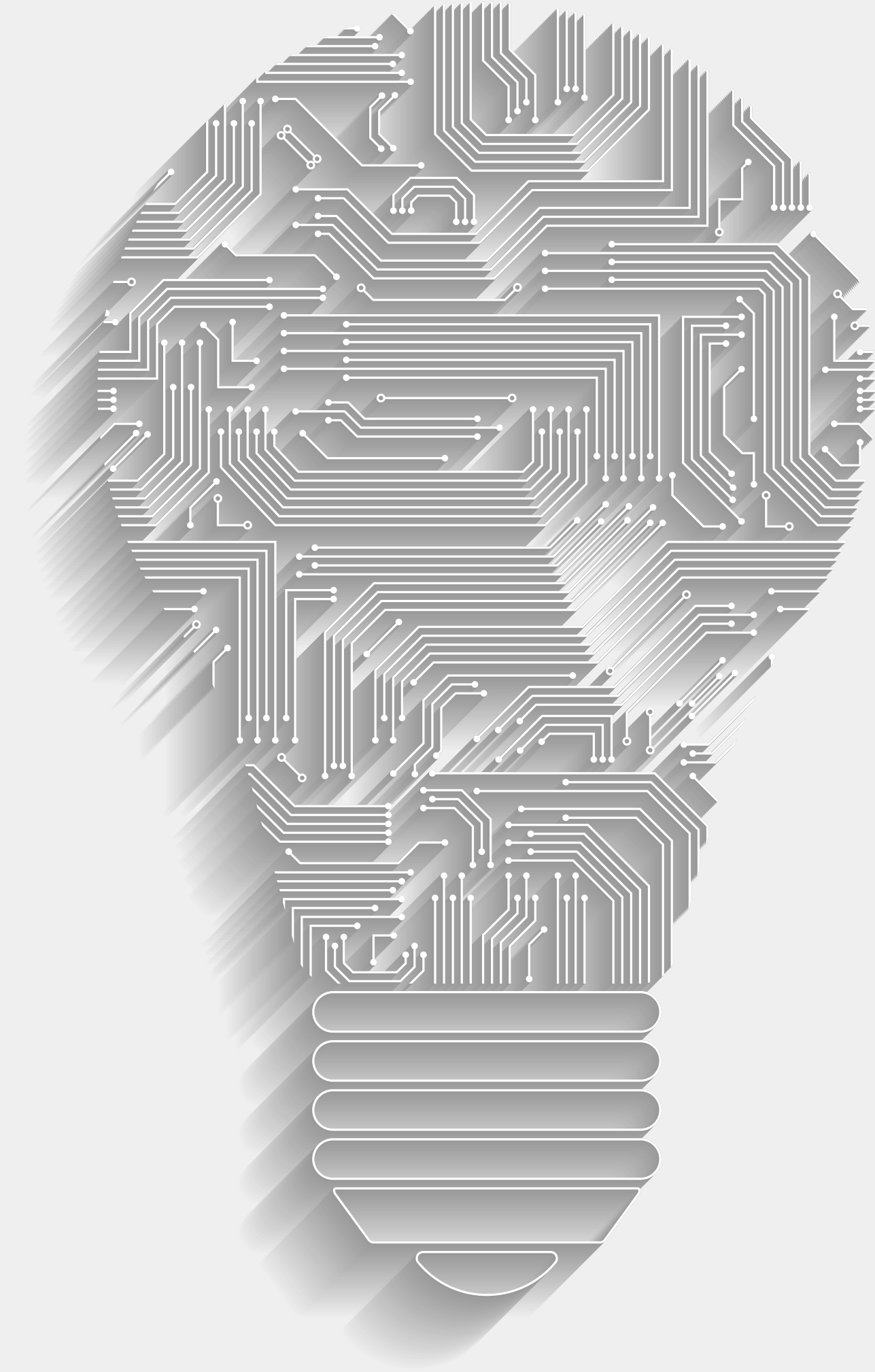
This time also represents **the constant improvement** that each area has had through time, as the customer service, delivery times, technology implementation, product quality and staff expertise **assuring the optimal 360° brand experience for our clients.**

**Teamwork**

**Each person who is part of our teamwork plays a significant role in the products and services development and implementation.** That's why we provide them with a secure environment, values and cultural approach to create an atmosphere where they feel engaged with the company's mission and they feel free to come up with the best engineering solutions.



**FLETCHER & SONS**  
**FOUNDRY**



TRUSTED QUALITY  
TRUSTED SERVICE

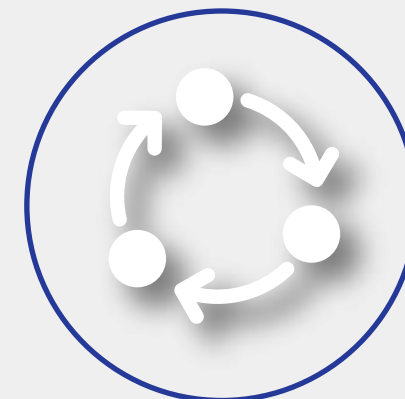
# OUR EXPERTISE

## OUR PROMISE

We produce rail freight components, made for Australian conditions, at our Adelaide foundry and source specialist castings and other products globally. Fletcher and Sons is committed to listening to our customers, consistently producing the highest quality products and delivering on time and on budget.



**100 -Year- Old**  
Australian  
Company



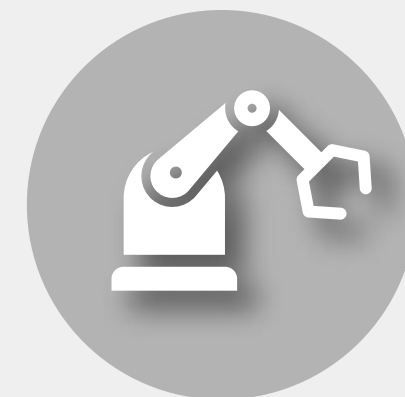
**Continuous**  
**Improvement**



Reliability



Strong  
Relationships



Hi-Tech



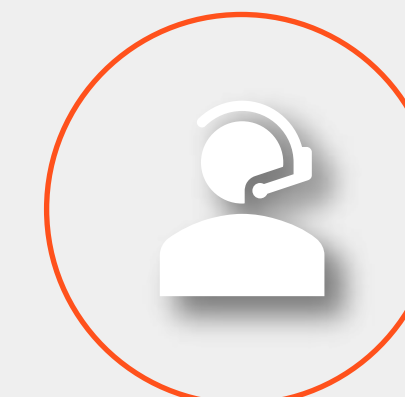
Loyalty



Innovation



Flexibility



Customer  
Service

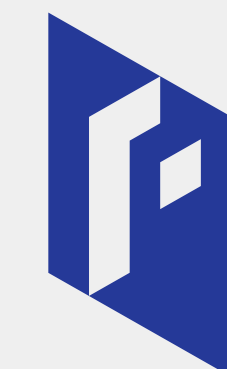


**FLETCHER & SONS**  
**FOUNDRY**

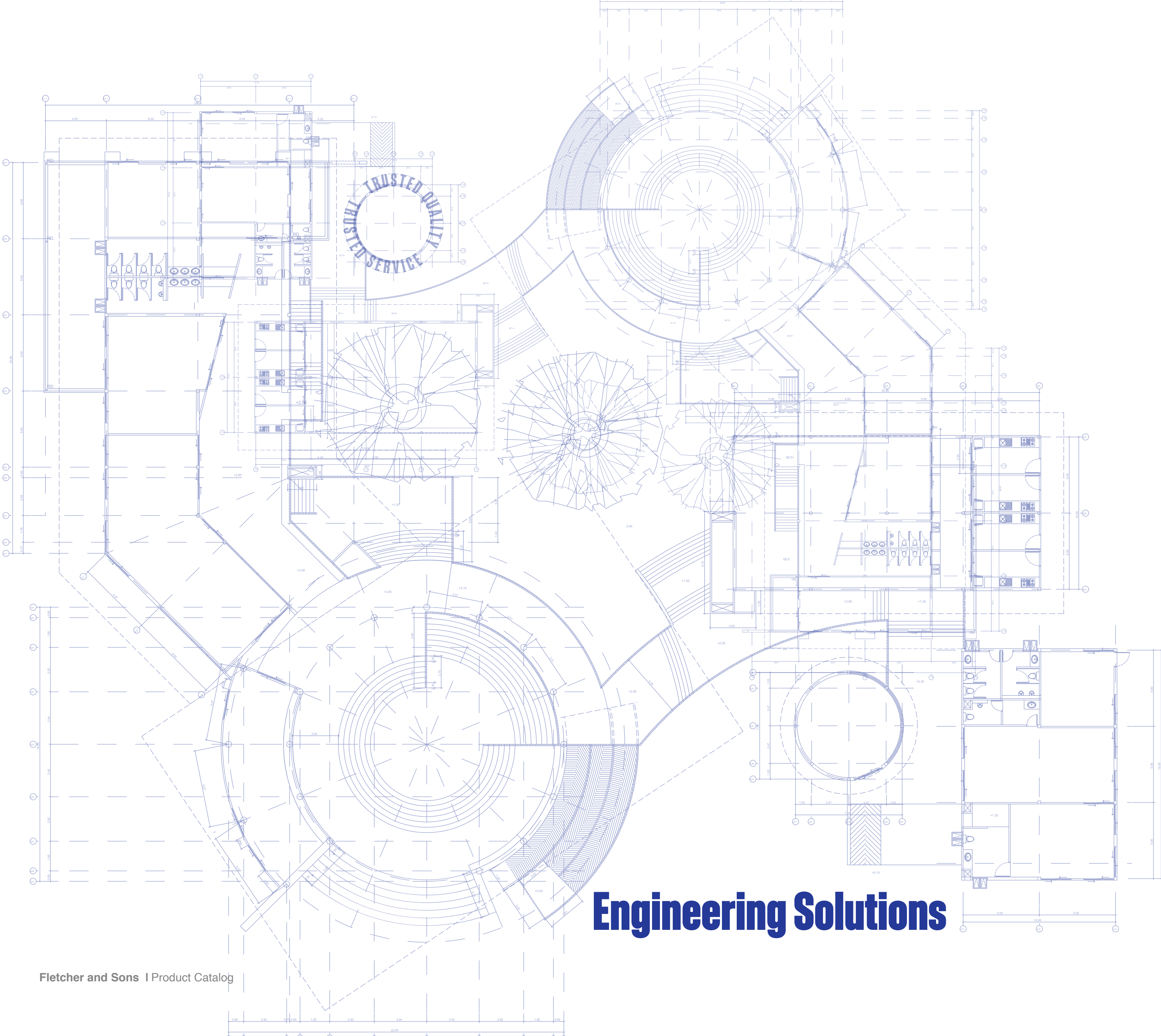
# QUALITY PROCESS

## RESPONSIBILITY

Our purpose is to build a relationship of trust with our customers based on consistently high product **quality** and outstanding **customer service** through a **professional and certified team**.



**FLETCHER & SONS**  
**FOUNDRY**



# Table of Contents

- 1. Couplers
- 2. Knuckles
- 3. Centre Plates
- 4. Company purpose
- 5. Yokes
- 6. Followers
- 7. Drawbars
- 8. Contact Information

**Engineering Solutions**



# Coupler D-23

**Reference Number:** E42RT

**Drawing Number** ARC-112

**Material:** FS20HD

**Heat treatment:** Water Quench and Tempering

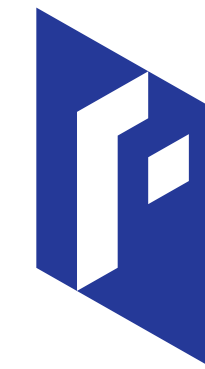
**Machining:** No

**Operation:** Top Lifter



Product	Pattern	Weight	Fletcher Reference
Coupler D-23 Top Operated	ARC-112	200	E42RT
Coupler E76TTS Top Operated	ARC-86	250	E76TST
Coupler OC68BR Bottom Operated	ARC-123	212	EO42RBR
Coupler E89QBR Bottom Operated	ARC-153	290	E89RBR
Coupler 56047/1 Bottom Operated	ARC-105	200	E42WBBR
Coupler EOU99TE Bottom Operated	ARC-139	260	EO97RBR
Coupler EFC99TEO Top Operated	ARC-160	320	EFO99T
Coupler AEOU99TE Top Operated	ARC-252	260	EOU99T
Coupler Body EC68 Bottom Operated	ARC-120	202	E42FBBR
Coupler Body EC99 Bottom Operated	ARC 151	250	E74RBR
Coupler A204 E88TTS Top Operated	ARC-85	250	E88TST
Coupler A149 Pin 89mm Bottom Operated	ARC-111	200	E42RBR
Coupler EOU135 PQDY Bottom Operated	ARC-142	365	EO135FBBR
Coupler E Type EC68TQR Top Operated	ARC-106	200	E42QRT
Coupler F Fixed End 56169 Bottom Operated	ARC-104	270	F41 RBR
Coupler Rotary Bottom A170 Bottom Operated	ARC-155	290	E96FBR
Coupler Top 835mm A259TK Bottom Operated	ARC-251	250	E58FBBR
Coupler EO FIXED 10A 28019 Bottom Operated	ARC-102	180	EO42WBBR
Coupler Short Shank EOU68BR Bottom Operated	ARC-132	200	EO42RBBR
Coupler E/F Double shelf 12" Head Bottom Operated	ARC-180	240	EF41 DSBK

## COUPLERS



# Knuckle QRC

**Drawing:** O-114

**Material:** FS20HD

**Heat treatment:** Water Quench and Tempering

**Machining:** No



Product	Ref	Pattern
Knuckle QRC2 - D23	QRC2	O-114B
Knuckle WAR	WAR	O-108
Knuckle Sharon Type	Sharon	Q-54
Knuckle - F- Heavy Duty	Heavy Duty	O-109
Knuckle E Type, AARE	AARE	O-113
Coupler Fixed Knuckle AARF	AARF	O-110

# Knuckles



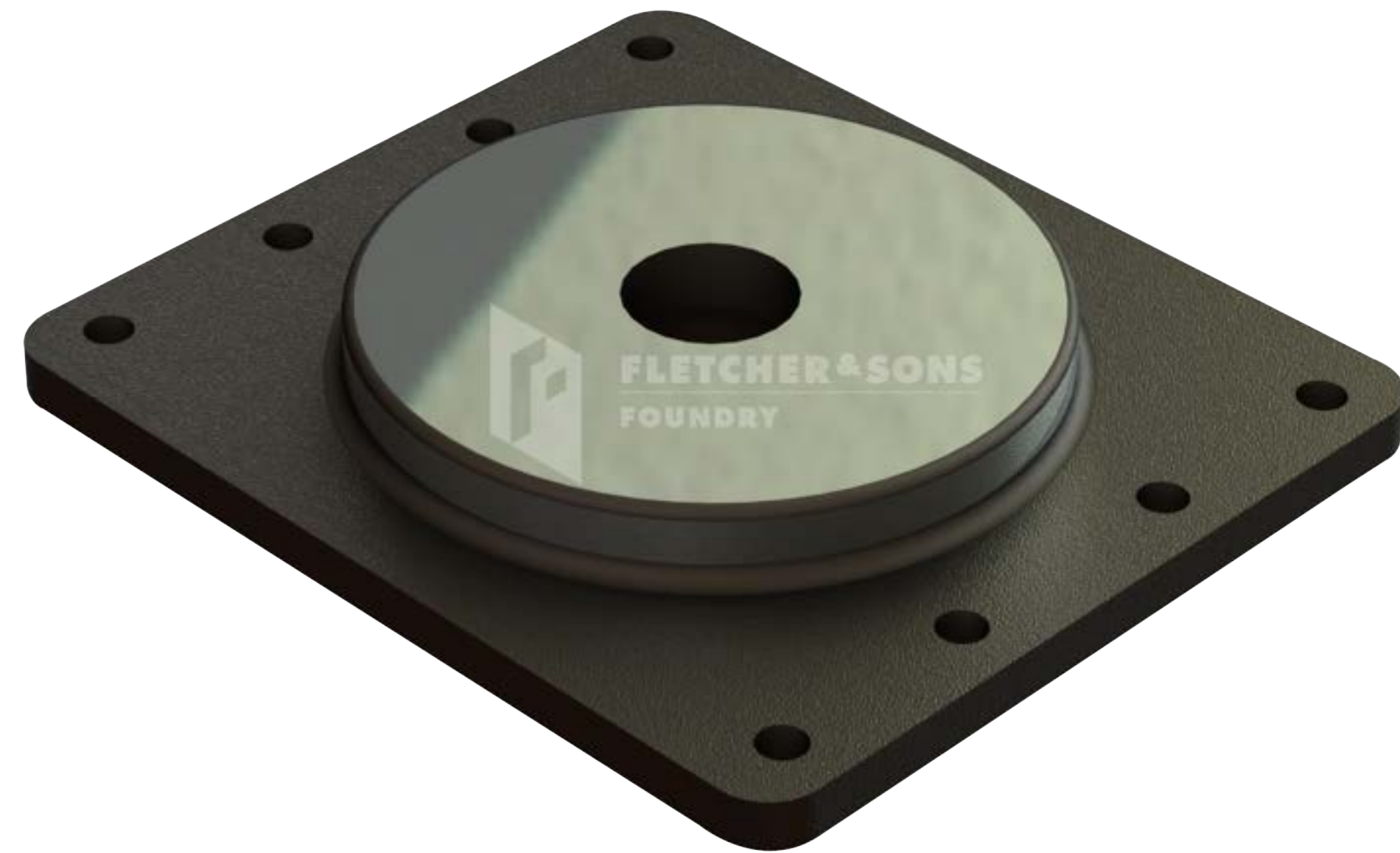
# Centre Plate Top

**Drawing:** ANR-56

**Reference Number:** W8-22

**Material:** C5

**Heat treatment:** Anneal and Flame Hardening



Product	Ref	Pattern
Centre Plate 1700 CL	2020850	X-59
Plate Centre Low Weld	A1-ZBK	G-12
Top Bogie Centre Plate	FQCY-001-01	G-4
Centre Plate Bogie Pivot	DTD2	E-85
Centre Plate C8921 W8F80	W8F80	B1-50
Centre Plate Top 300mm Dia	W8-22	ANR-56
Centre Plate Bolted Type RSK	RSK	ANR-82
Plate, Top Centre W3-32 BOGIE	W3-32	B1-57
Centre Plate ANR-105 CGAY-106	CGAY-106	ANR-105

## Centre Plates





TRUSTED QUALITY  
TRUSTED SERVICE

**OUR PURPOSE IS TO BUILD A RELATIONSHIP OF TRUST WITH OUR CUSTOMERS BASED ON CONSISTENTLY HIGH PRODUCT QUALITY AND OUTSTANDING CUSTOMER SERVICE.**



**FLETCHER & SONS**  
**FOUNDRY**

# Yoke Fixed 24 5/8 Pocket 54288

**Drawing:** ANR-29

**Material:** FS20HD

**Heat treatment:** Water Quench and Tempering

**Machining:** Yes



## Yokes

Product	Ref	Pattern
Yoke Rotary	6-CM-85	ANR-30
Keyed Yoke	1237-F	D1-34
Yoke 6-CM-6317 NG	6-CM-6317	ANR-28
Yoke Triple Shear 10802	10802	ANR-106
Yoke Fixed 24 5/8" Pocket 54288	54288	ANR-29
Yoke Drawgear 44648 - Y47 238mm Pocket	44648	ARC-220



**FLETCHER & SONS**  
**FOUNDRY**

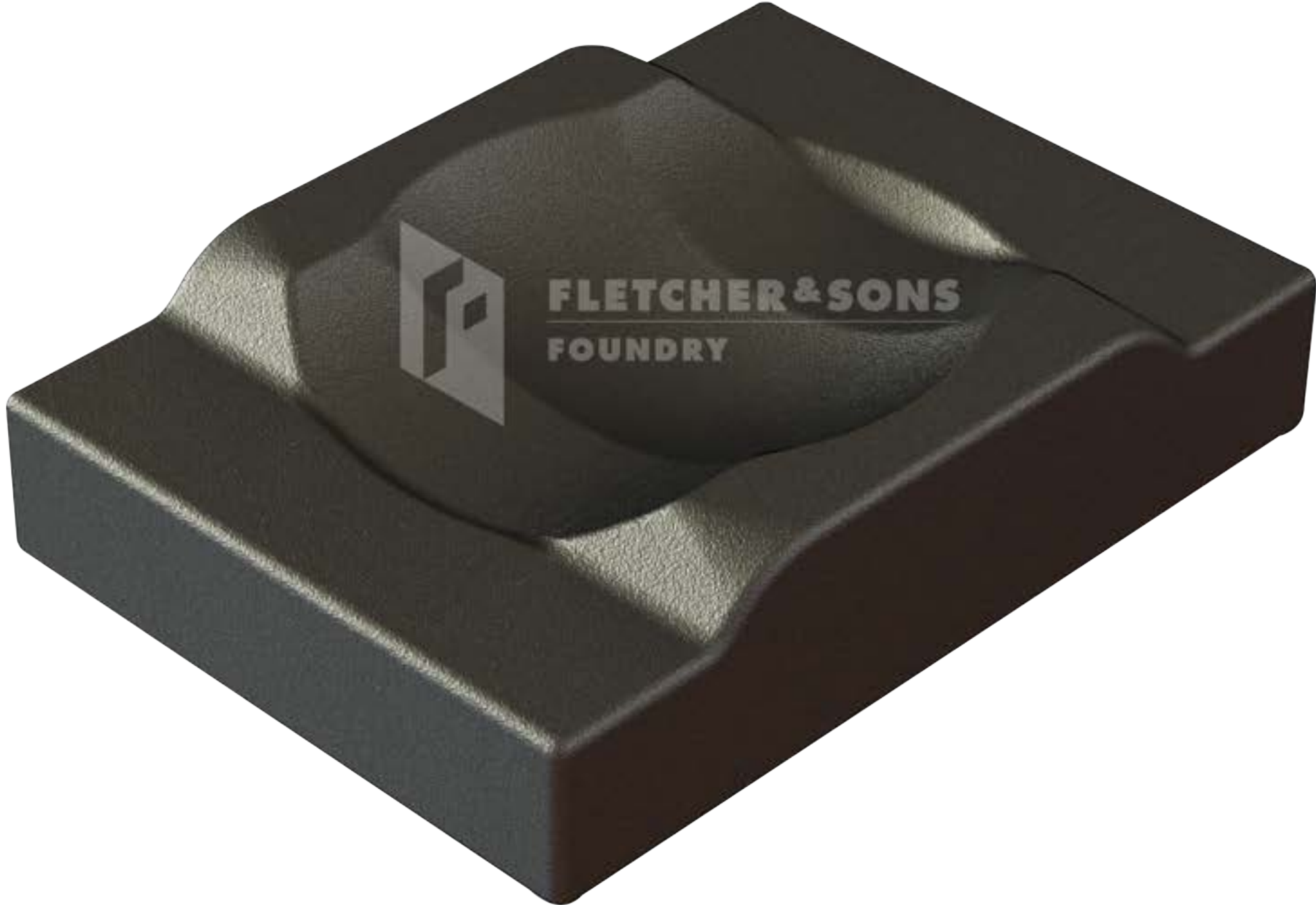
# Follower Block -6-CM 89 - Fixed Ore Car

Reference Number: 6-CM-89

Drawing Number: ANR-18

Material: FS20HD

Heat treatment: Quenching and tempering



Product	Ref	Pattern
Follower 6-CM-4	6-CM-4	ANR-24
Follower Coupler Half Moon 6-CM-6	6-CM-6	ANR-98
Follower, Draftgear #11357 RF361 57mm	RF361	ANR-107
Follower Block - 6-CM-89 - Fixed Ore Car	6-CM-89	ANR-18

## Followers



# DrawBar

**Reference Number:** DB1330

**Drawing Number** A-21

**Material:** FS20HD

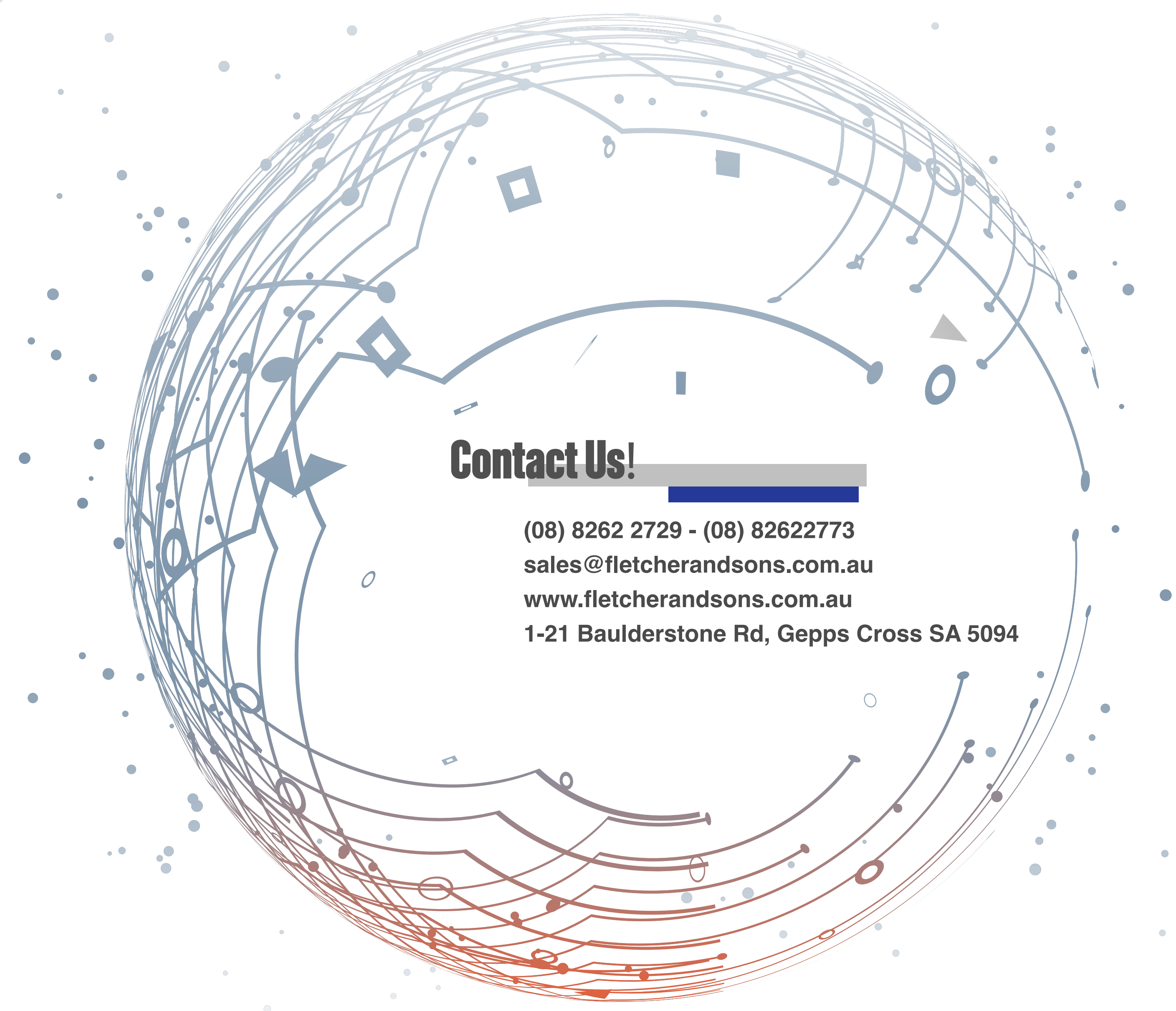
**Heat treatment:** Quenching and tempering



Product	Ref	Pattern
Draw Bar # 1328	A2-45679	A-20
Draw Bar # 1320	A2-44649	A-21

# DRAWBARS





## Contact Us!

(08) 8262 2729 - (08) 82622773  
sales@fletcherandsons.com.au  
www.fletcherandsons.com.au  
1-21 Boulderstone Rd, Gepps Cross SA 5094



**FLETCHER & SONS**  
**FOUNDRY**